

## PROJECT DATA

APPLICATION - Interior floor slab on grade

CONTRACTOR - JLL Concrete Construction

CONCRETE PRODUCER - Pahl Ready Mix Concrete

## FEATURED ADMIXTURES

**ULTRAFINISH 1L** – Nano Colloidal Silica admixture for enhanced finishability, surface densification, and reduced potential for shrinkage cracking.

**OPTIFLO MR** – Mid Range water reducer

**ULTRAFLO 2000** – High Range water reducer

**NITROCAST K** – Water reducing and accelerating admixture

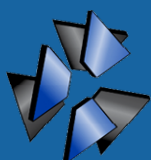
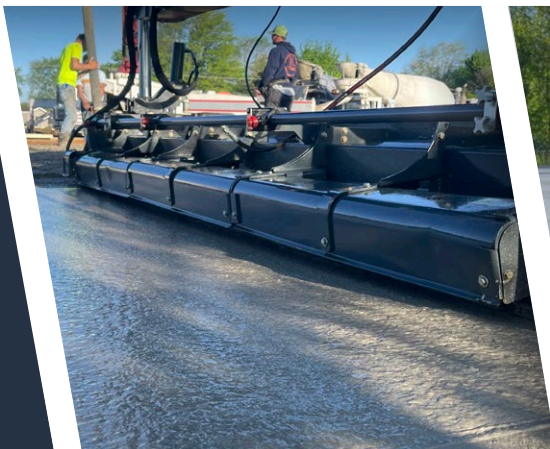
## SCOPE OF PROJECT

**OptiFlo MR** and **UltraFlo 2000** were used to aid workability for placement, optimize cementitious hydration, added finishability and water reduction. **NitroCast K** was used to help accelerate set time in cooler weather, decreasing time on the job and for fast strength gain.

**UltraFinish 1L** was used to save on time, labor and enhance finishability further; helping maintain finish control while also providing a denser, more durable concrete surface.

PREMIERE CONCRETE ADMIXTURES  
PROJECT SPOTLIGHT

## DOLLAR GENERAL MARKET DELTA, OHIO



**Premiere**  
Concrete Admixtures



508 Cedar Street  
Pioneer, OH 43554



hello@premiereadmix.com  
www.premiereadmix.com